
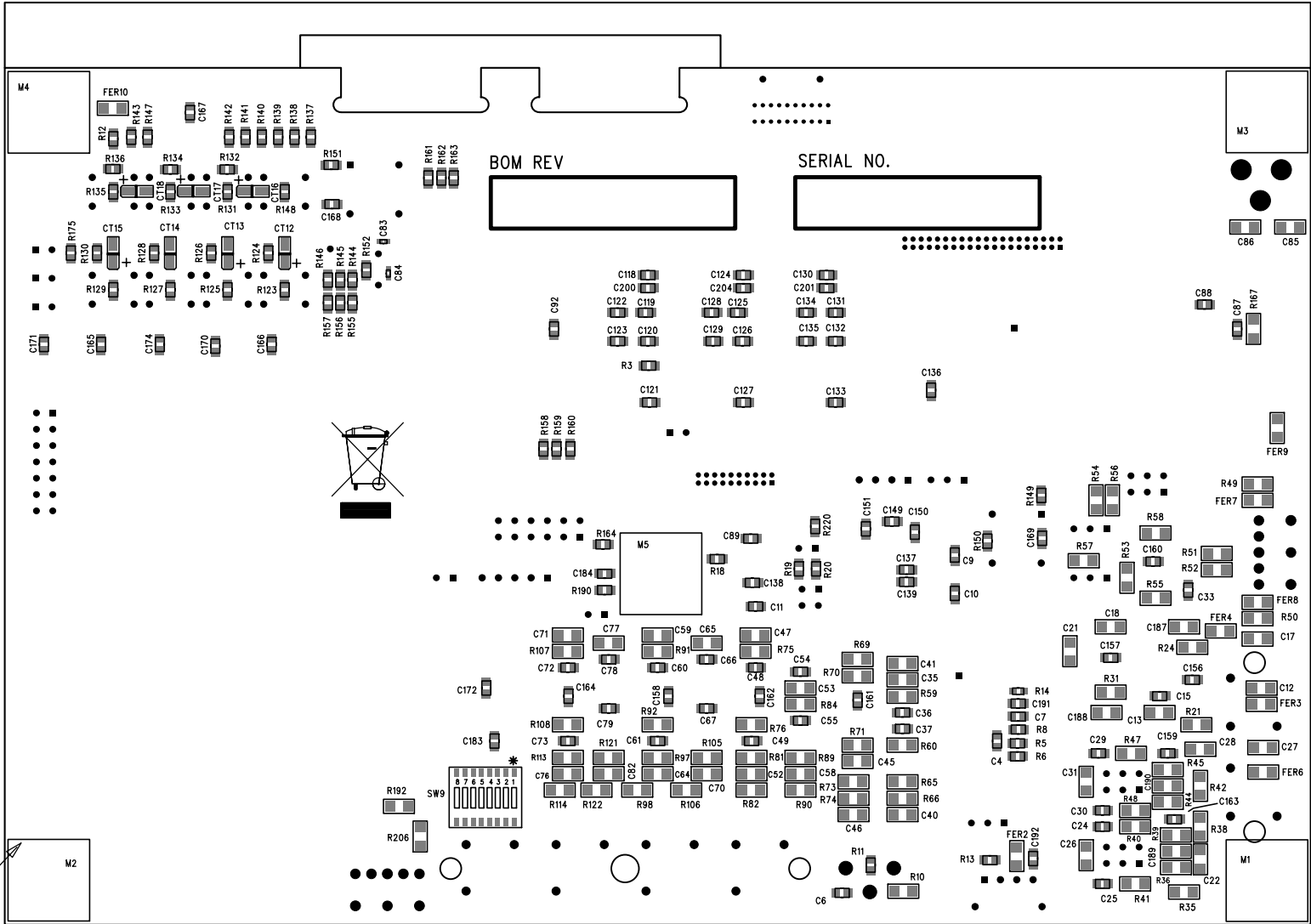


NOTES:

1. POPULATE M1-M5 WITH RUBBER FEET. SEE SHEET 2 FOR LOCATION.
2. PLACE SERIAL NUMBER ON BOTTOM SIDE SEE SHEET 2 FOR LOCATION.
3. PLACE BOM REV ON BOTTOM SIDE SEE SHEET 2 FOR LOCATION.
4. U24 & U25 HAVE OPTIONAL MOUNTING FOR EITHER SMT OR THROUGH HOLE. USE PARTS SPECIFIED.
5. EITHER U24 OR Y2 WILL BE POPULATED. NEVER BOTH, USE PART SPECIFIED.
6. BEFORE WAVE SOLDERING MASK HOLES FOR P1,P3,P9,P10,P11,Y2 TP1-TP3.
7. BREAK OFF STRIP AT COMPLETION OF ASSEMBLY.

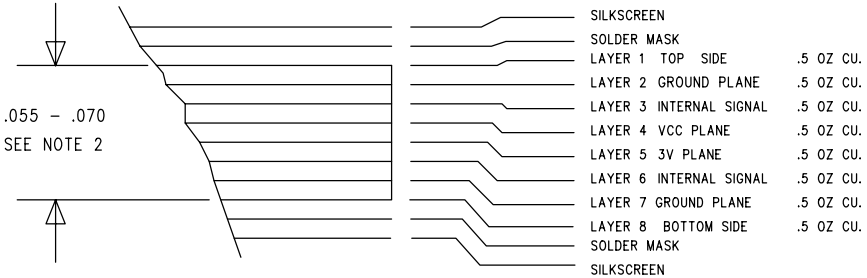
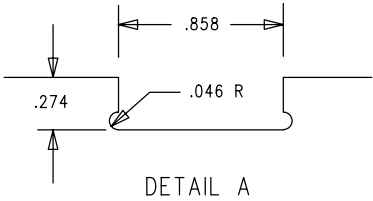
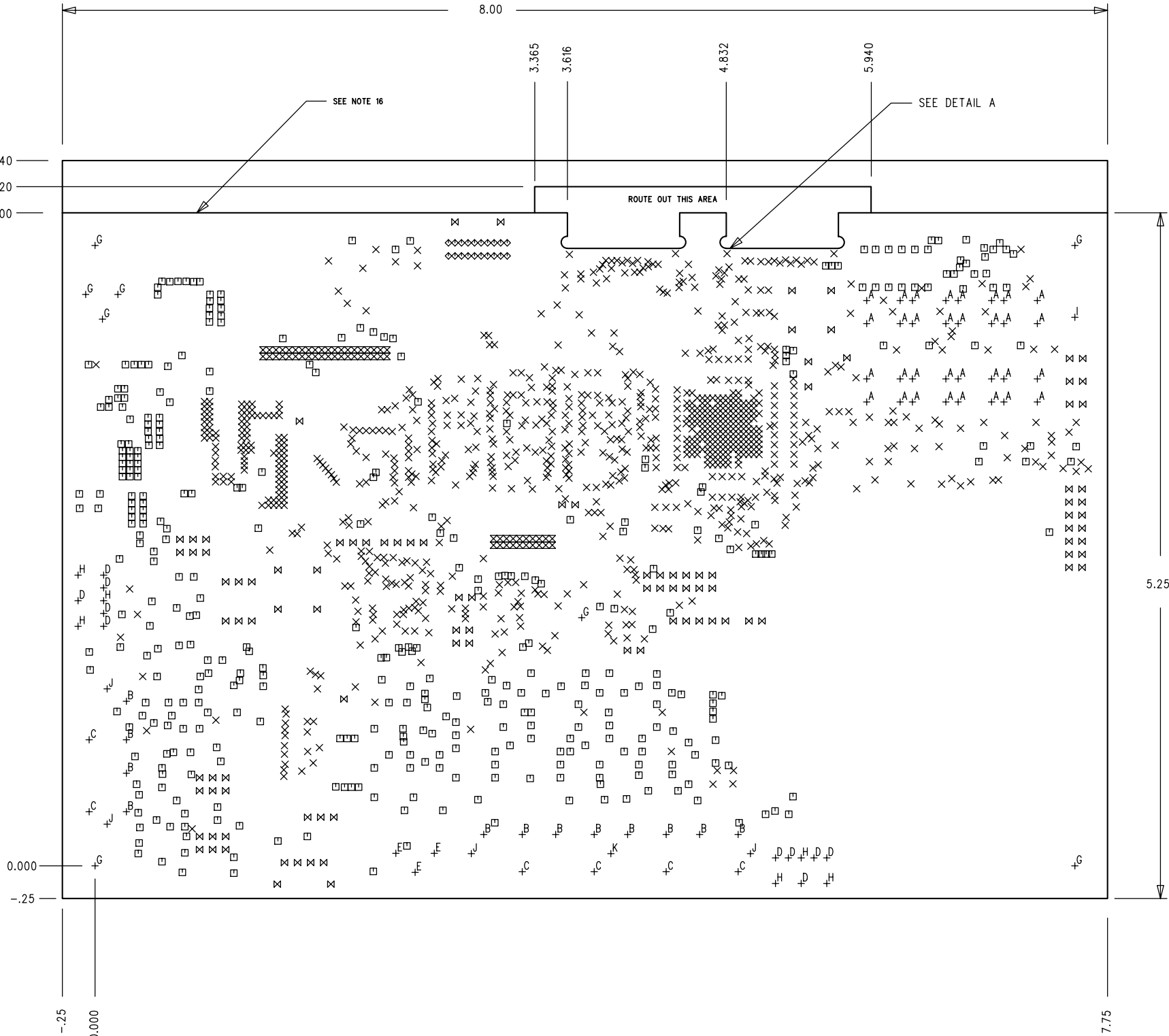
UNLESS OTHERWISE SPECIFIED DIMENSIONS ARE IN INCHES TOLERANCES ARE : .XX +/- .010 .XXX +/- .005	CONTRACT NO.		 20 Cotton Road Nashua, New Hampshire 03063 (603) 883-2430 FAX (603) 882-2655
	APPROVALS	DATE	
MATERIAL	DRAWN	06/26/07	ASSEMBLY DRAWING TOP SIDE 21161N EZ-KIT LITE
FINISH	CHECKED		
DO NOT SCALE THIS DRAWING	ENGINEERING		SIZE B DWG. NO. ASSMAA0157-2000-REF REV. 3.0
	QUALITY		
	MANUFACTURING		SCALE 1 : 1 SHEET 1 OF 2

RUBBER FEET TYP 5 PL




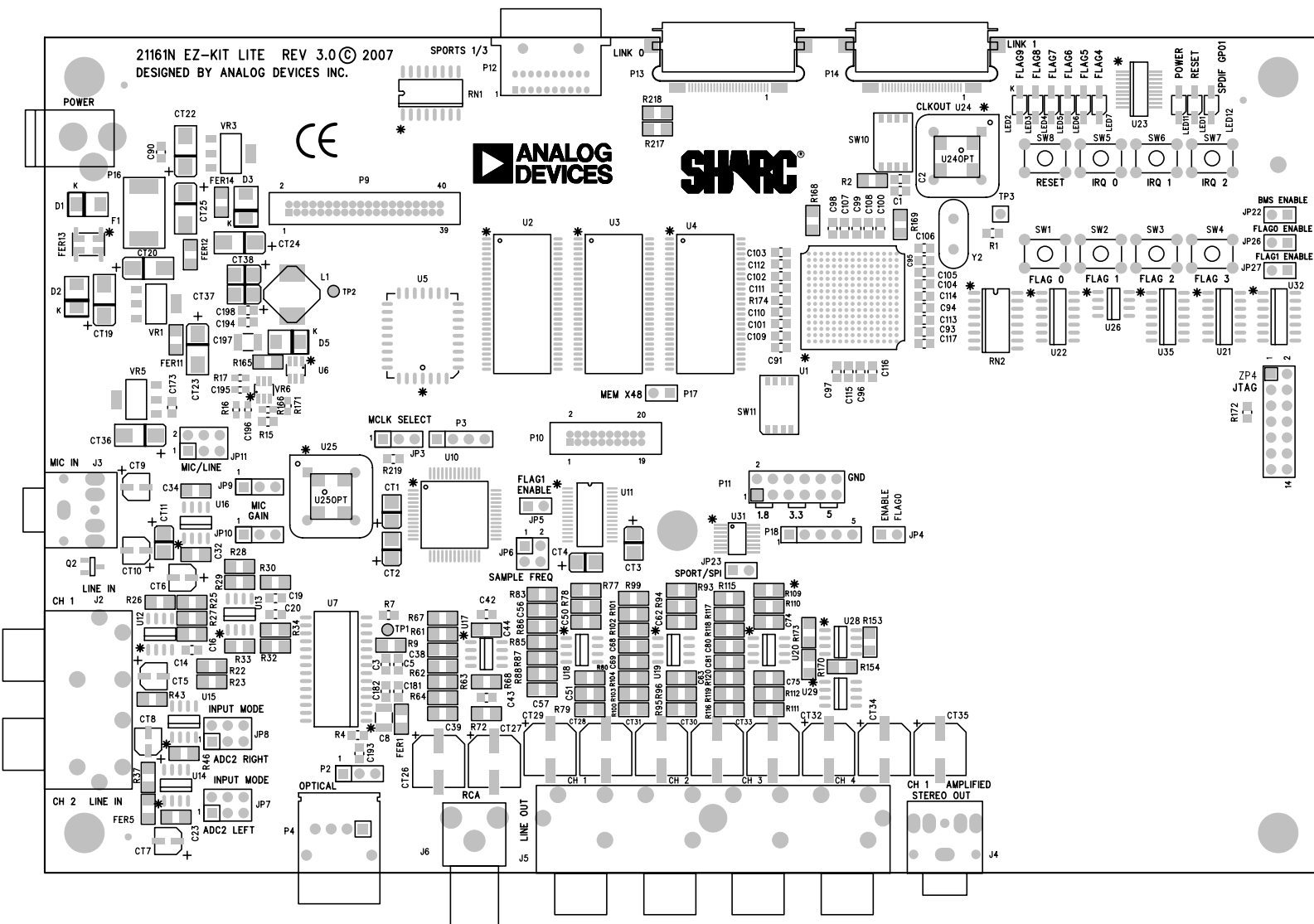
UNLESS OTHERWISE SPECIFIED DIMENSIONS ARE IN INCHES TOLERANCES ARE : .XX +/- .010 .XXX +/- .005	CONTRACT NO.		<div><div></div><div>ANALOG DEVICES</div></div> <div>20 Cotton Road Nashua, New Hampshire 03063 (603) 883-2430 FAX (603) 882-2655</div>	
	APPROVALS	DATE		
MATERIAL	DRAWN	06/26/07	ASSEMBLY DRAWING BOTTOM SIDE 21161N EZ-KIT LITE	
FINISH	CHECKED			
DO NOT SCALE THIS DRAWING	ENGINEERING		SIZE B	REV. 3.0
	QUALITY		DWG. NO.	
	MANUFACTURING		SCALE 1 : 1	SHEET 2 OF 2


SIZE	QTY	SYM	PLATED	TOL
10	967	✕	YES	+0.003-0.010
14	396	□	YES	+0.003-0.014
22	20	◇	YES	+/-0.003
28	60	⊠	YES	+/-0.003
37	104	⊞	YES	+/-0.003
41	32	+ ^A	YES	+/-0.003
51	12	+ ^B	YES	+/-0.003
59	6	+ ^C	YES	+/-0.003
70	10	+ ^D	YES	+/-0.003
85	3	+ ^E	YES	+/-0.003
125	8	+ ^G	YES	+/-0.005
67	6	+ ^H	NO	+/-0.003
126	1	+ ^I	NO	+/-0.005
140	4	+ ^J	NO	+/-0.005
187	1	+ ^K	NO	+/-0.005

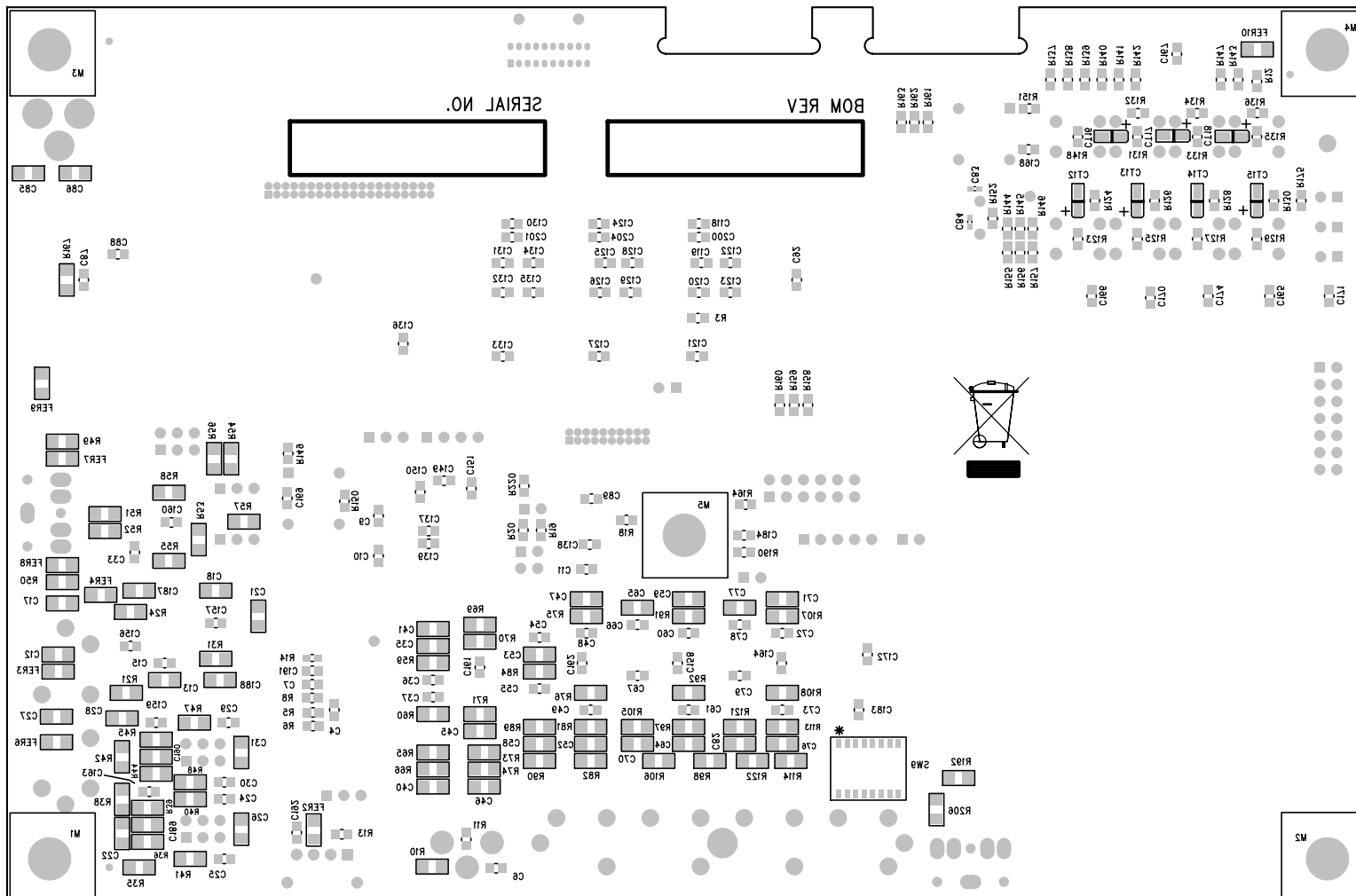



- UNLESS OTHERWISE SPECIFIED
- BOARD TO BE FABRICATED PER IPC-6012A, CLASS 2.
 - MATERIAL: POLYCLAD FR-370HR OR EQUIVALENT. OUTER LAYERS 1/2 OZ/SQFT CU
INNER LAYERS 1/2 OZ/SQFT CU FINISHED .062 (.055 MIN .070 MAX SEE DETAIL).
VENDOR MAY ADJUST THICKNESS TO FULFILL NOTE 9.
 - PLATING: ADDITIONAL CU PLATING 1 OZ/SQFT
ALL HOLES PLATED THROUGH, EXCEPT AS NOTED IN HOLE LEGEND.
MINIMUM PTH BARREL THICKNESS = 0.0008" MINIMUM AVERAGE
PER IPC-6012A WITH AMENDMENT 1, CLASS 2 REQUIREMENTS.
WITH NO SINGLE MEASUREMENT LESS THAN 0.00071 IN THE PLATED HOLES.
 - FINISH: SURFACES TO BE COATED BY ENIG OF 2 TO 10 MICROINCHES OVER
A MINIMUM OF 60-200 MICROINCHES OF LOW STRESS NICKEL.
 - SOLDERMASK: SOLDER MASK TO BE TRANSPARENT GREEN LPI BOTH SIDES PER GERBER FILES.
 - SILKSCREEN: WHITE EPOXY INK, APPLY TO BOTH SIDES PER GERBER FILES.
 - ARTWORK: MINIMUM FEATURE SIZE = 0.00492
MINIMUM AIR GAP = 0.00475
 - ALL DIMENSIONS ARE IN INCHES.
 - CONTROLLED IMPEDANCE: BOARD TO BE BUILT TO YIELD CONTROLLED IMPEDANCE
OF 60 OHMS +/- 10% ON ALL .00492" LINE WIDTHS
 - DO NOT ADD NON-FUNCTIONAL COPPER THIEVING ON OPEN AREAS OF OUTER LAYERS.
THIEVING IS ALLOWED ON INNER LAYERS, UNLESS OTHERWISE SPECIFIED.
 - VIAS SHOULD BE COVERED ACCORDING TO ONE OF THE FOLLOWING METHODS.
METHOD 1 IS PREFERRED.
METHOD 1: VIAS MUST BE FILLED WITH SOLDERMASK MATERIAL AFTER
ELECTROLESS NICKEL/IMMERSION GOLD AND BEFORE PRIMARY LPI MASK. AFTER THE
FILL IS CURED, THE PRIMARY MASK IS THEN APPLIED WITH NO VIA APERTURES
BOTH SIDES.
METHOD 2: AFTER APPLICATION OF FULL BODY ELECTROLESS NICKEL/IMMERSION
GOLD, APPLY PRIMARY MASK WITH REDUCED VIA APERTURES THAT ARE 6 MILS
LARGER THAN DRILLED HOLE DIAMETER BOTH SIDES. THEN APPLY SOLDER MASK
PLUG ON COMPONENT SIDE.
 - VIA HOLES (.006, .010, .014) REQUIRE TANGENCY ONLY, INSTEAD OF ANNULAR RING.
 - TEARDROP PADS ARE ACCEPTABLE WHERE NEEDED.
 - USE IPC-D-356A NETLIST AS SUPPLIED FOR CHECKING.
 - BUILD AS 1-UP PCB.
 - V SCORE 1 LINE ON BOTH SIDES OF THE BOARD. SEE DETAIL.

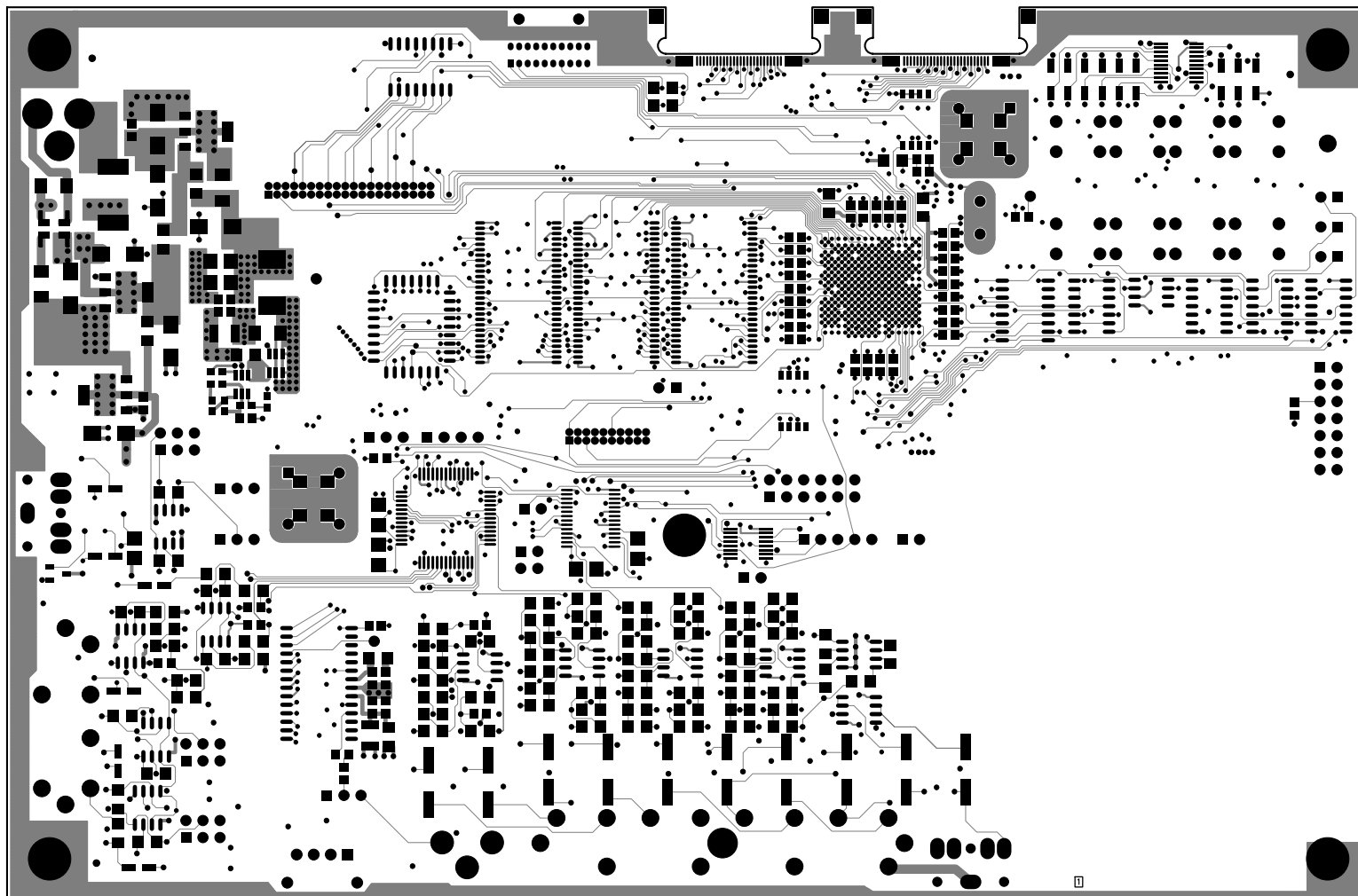
UNLESS OTHERWISE SPECIFIED DIMENSIONS ARE IN INCHES TOLERANCES ARE : .XX +/- .010 .XXX +/- .005	CONTRACT NO.		 20 Cotton Road Nashua, New Hampshire 03063 (603) 883-2430 FAX (603) 882-2655	
	APPROVALS	DATE		
MATERIAL	DRAWN	06/26/07	FABRICATION DRAWING 21161N EZ-KIT LITE	
SEE NOTES	CHECKED			
FINISH	ENGINEERING		SIZE B	REV. 3.0
SEE NOTES	QUALITY		DWG. NO.	
DO NOT SCALE THIS DRAWING	MANUFACTURING		SCALE 1 : 1	SHEET 1 OF 1




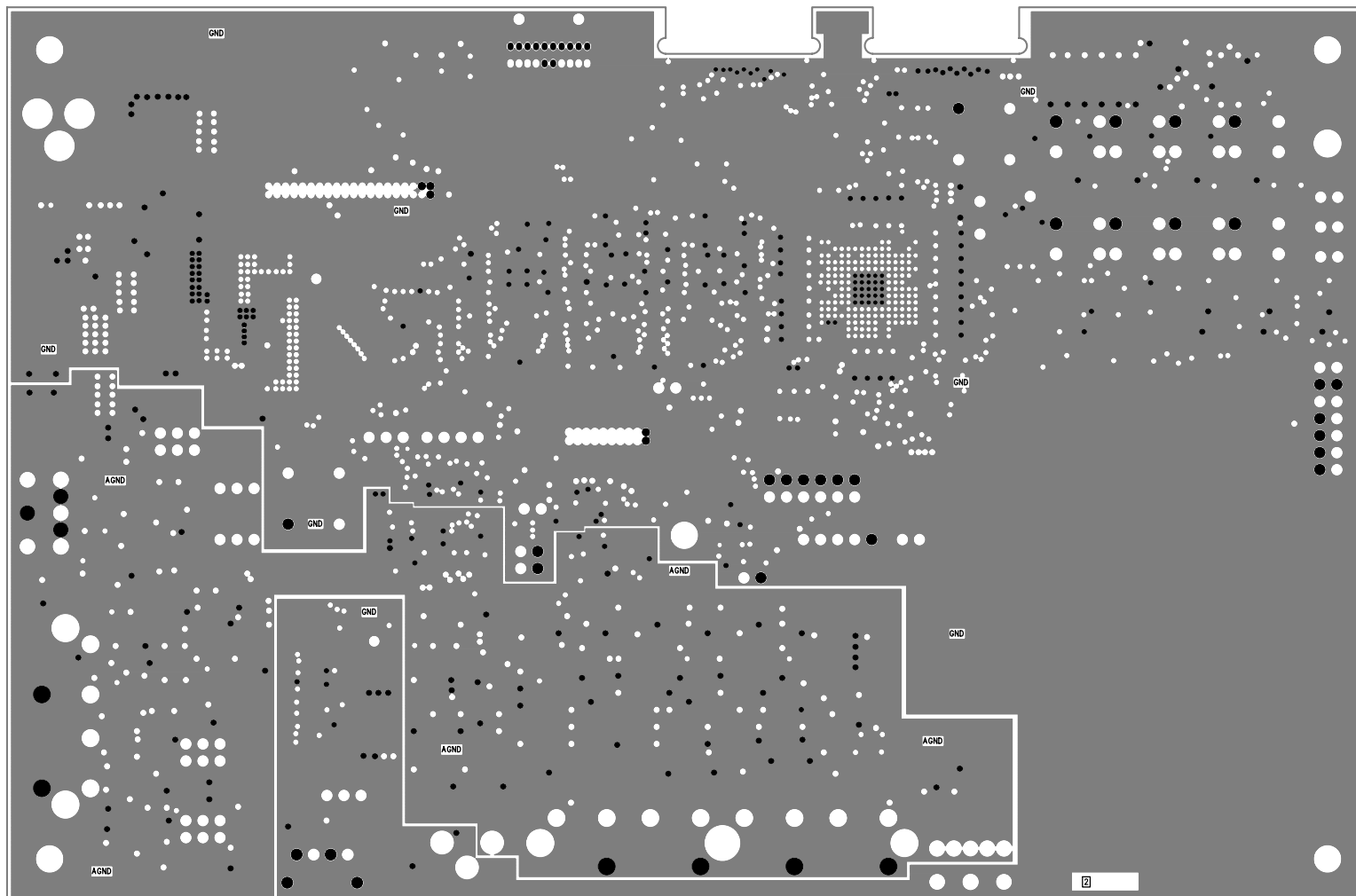
UNLESS OTHERWISE SPECIFIED DIMENSIONS ARE IN INCHES TOLERANCES ARE : .XX +/- .010 .XXX +/- .005	CONTRACT NO.		 20 Cotton Road Nashua, New Hampshire 03063 (603) 883-2430 FAX (603) 882-2655
	APPROVALS	DATE	
MATERIAL	DRAWN	06/26/07	SILKSCREEN TOP SIDE 21161N EZ-KIT LITE
	CHECKED		
FINISH	ENGINEERING		<div> <div>SIZE</div> <div>B</div> </div> <div> <div>DWG. NO.</div> <div>A0157-2000-REF</div> </div> <div> <div>REV.</div> <div>3.0</div> </div>
	QUALITY		
DO NOT SCALE THIS DRAWING	MANUFACTURING		<div> <div>SCALE</div> <div>1 : 1</div> </div> <div> <div>SHEET</div> <div>11</div> <div>OF</div> <div>14</div> </div>




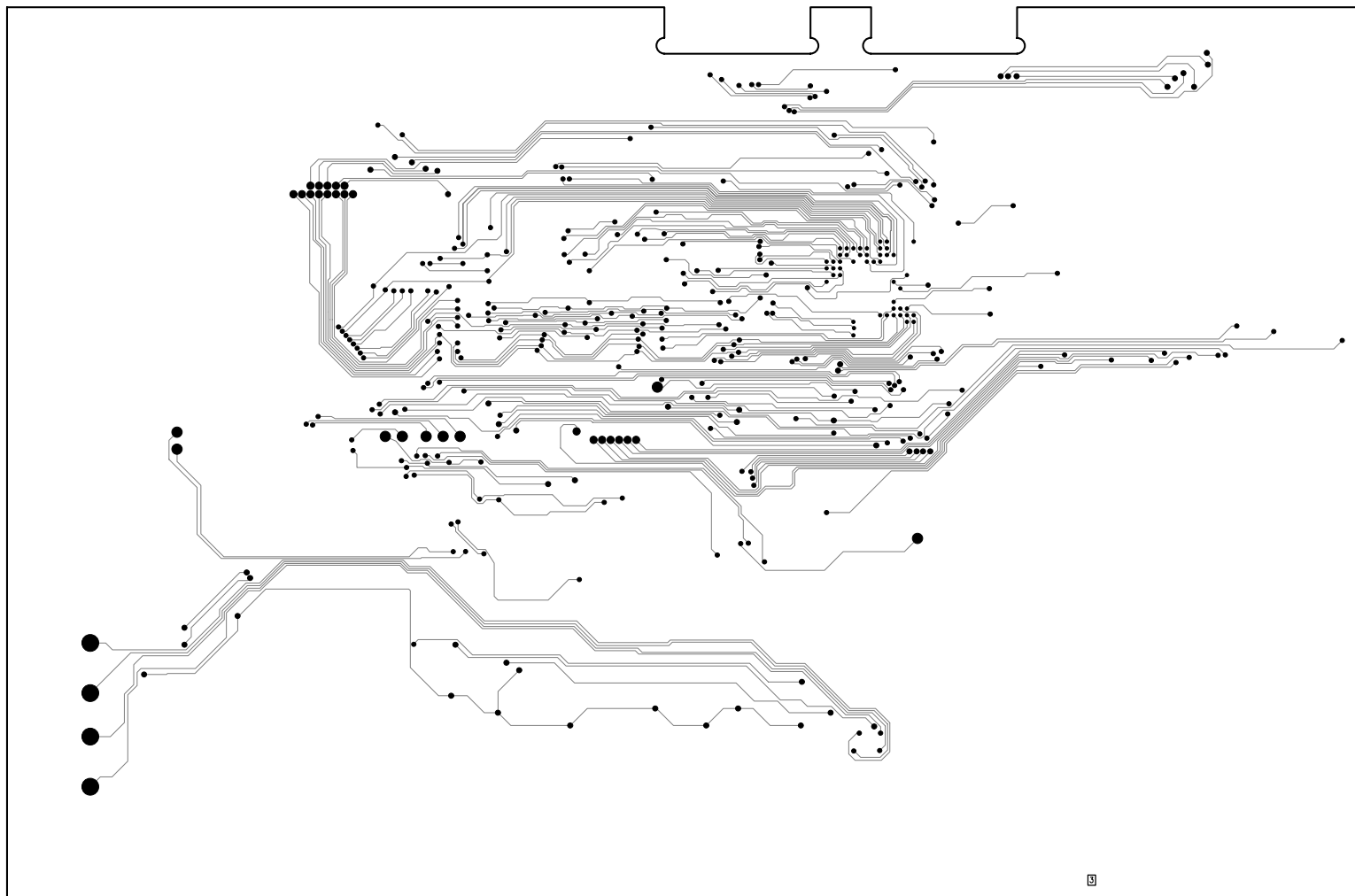
UNLESS OTHERWISE SPECIFIED DIMENSIONS ARE IN INCHES TOLERANCES ARE : .XX +/- .010 .XXX +/- .005	CONTRACT NO.		 20 Cotton Road Nashua, New Hampshire 03063 (603) 883-2430 FAX (603) 882-2655	
	APPROVALS	DATE		
MATERIAL	DRAWN	06/26/07	SILKSCREEN BOTTOM SIDE 21161N EZ-KIT LITE	
FINISH	ENGINEERING			
DO NOT SCALE THIS DRAWING	MANUFACTURING		SIZE B	DWG. NO. A0157-2000-REF REV. 3.0
SCALE 1 : 1			SHEET 12 OF 14	




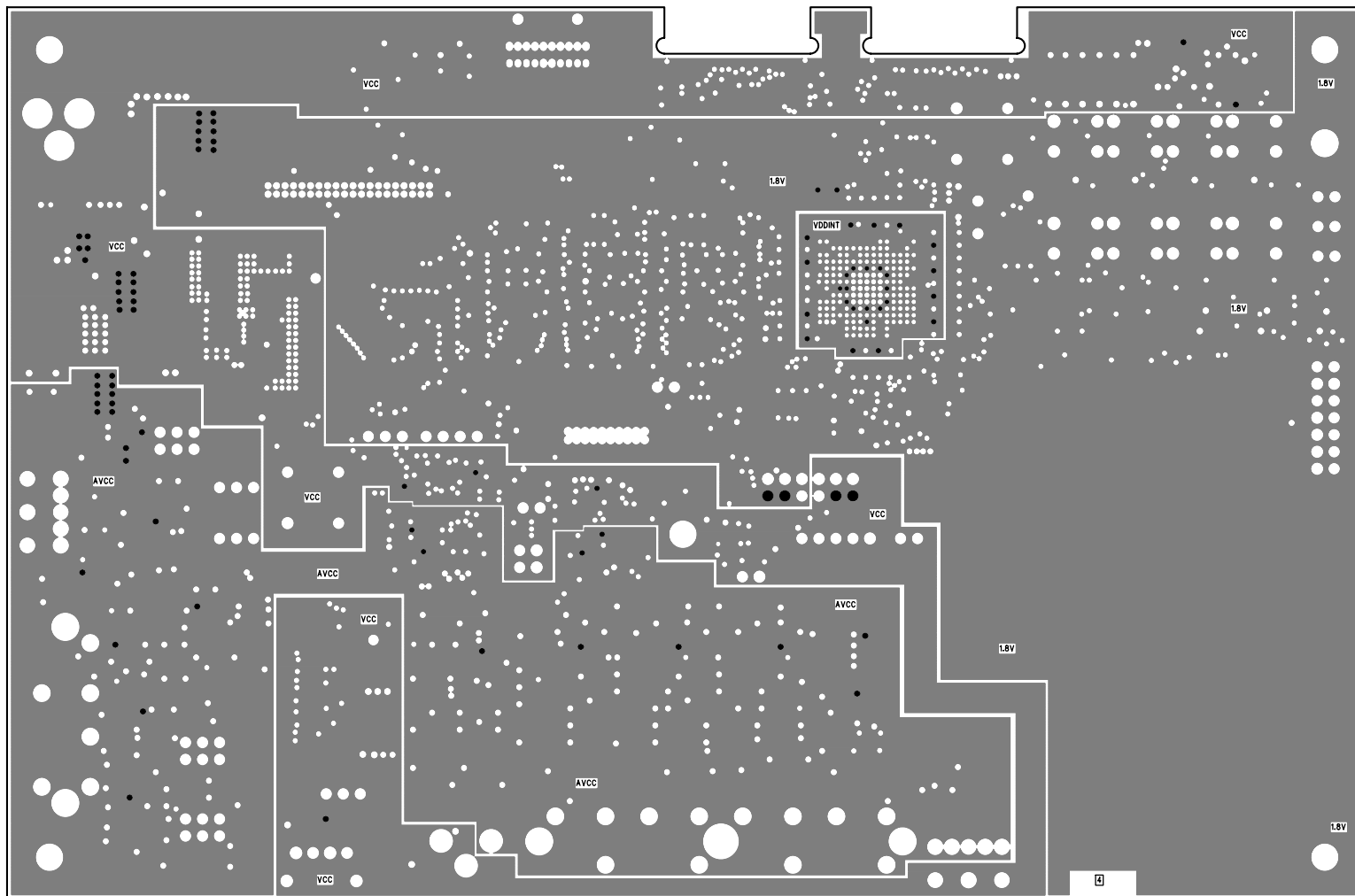
UNLESS OTHERWISE SPECIFIED DIMENSIONS ARE IN INCHES TOLERANCES ARE : .XX +/- .010 .XXX +/- .005	CONTRACT NO.		 20 Cotton Road Nashua, New Hampshire 03063 (603) 883-2430 FAX (603) 882-2655	
	APPROVALS	DATE		
	DRAWN	06/26/07	LAYER 1 TOP SIDE 21161N EZ-KIT LITE	
	CHECKED			
MATERIAL	ENGINEERING		SIZE B	DWG. NO. A0157-2000-REF
FINISH	QUALITY			
DO NOT SCALE THIS DRAWING	MANUFACTURING		SCALE 1 : 1	REV. 3.0
			SHEET 1 OF 14	




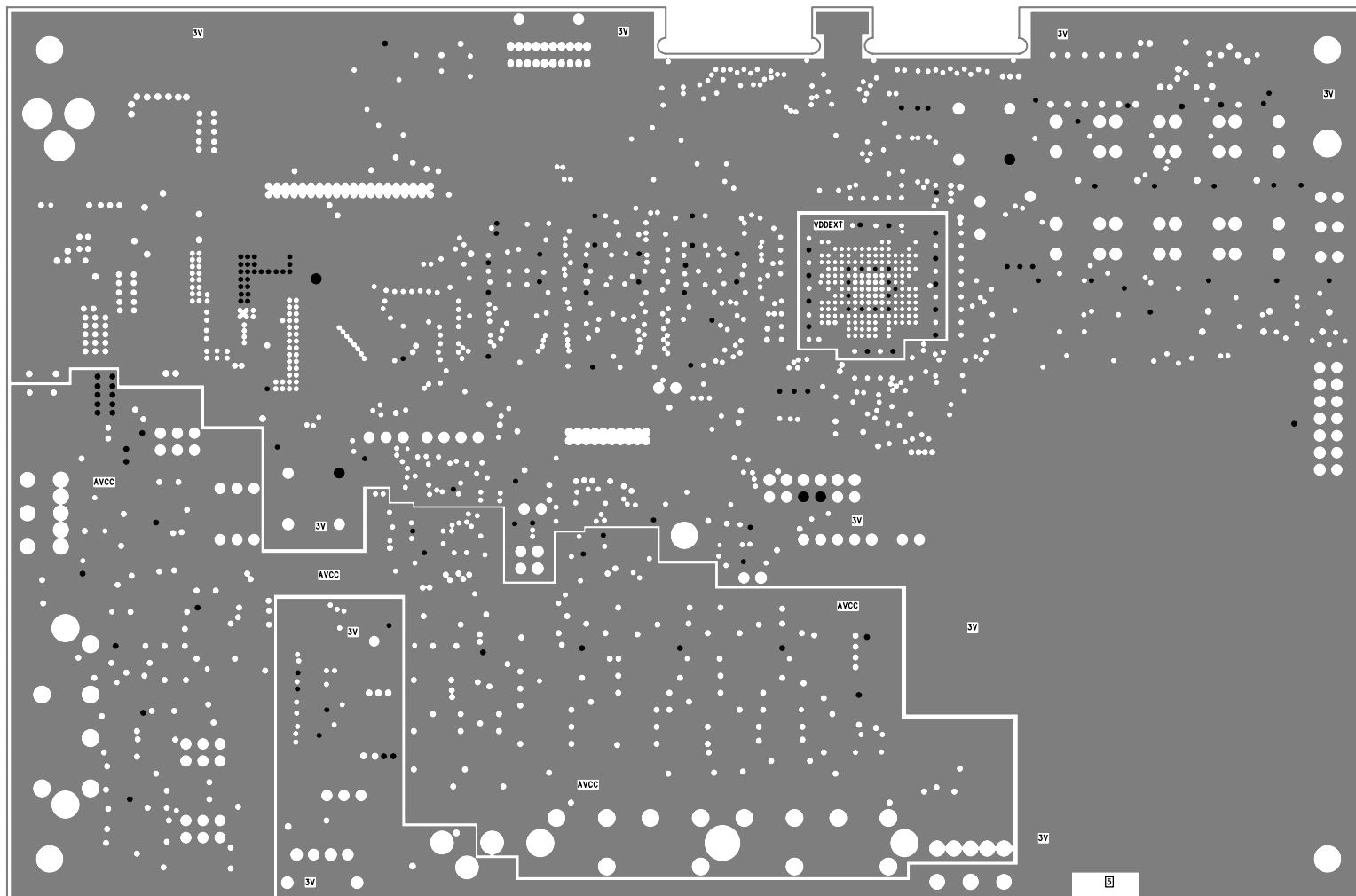
UNLESS OTHERWISE SPECIFIED DIMENSIONS ARE IN INCHES TOLERANCES ARE : .XX +/- .010 .XXX +/- .005	CONTRACT NO.		 20 Cotton Road Nashua, New Hampshire 03063 (603) 883-2430 FAX (603) 882-2655	
	APPROVALS	DATE		
MATERIAL	DRAWN	06/26/07	LAYER 2 GROUND PLANE 21161N EZ-KIT LITE	
	CHECKED			
FINISH	ENGINEERING		SIZE	DWG. NO. A0157-2000-REF
	QUALITY		B	
DO NOT SCALE THIS DRAWING	MANUFACTURING		SCALE 1 : 1	REV. 3.0
			SHEET 2 OF 14	




UNLESS OTHERWISE SPECIFIED DIMENSIONS ARE IN INCHES TOLERANCES ARE : .XX +/- .010 .XXX +/- .005	CONTRACT NO.		 20 Cotton Road Nashua, New Hampshire 03063 (603) 883-2430 FAX (603) 882-2655	
	APPROVALS	DATE		
MATERIAL	DRAWN	06/26/07	LAYER 3 INTER SIGNAL 21161N EZ-KIT LITE	
	CHECKED			
FINISH	ENGINEERING		SIZE	REV.
	QUALITY		B	3.0
DO NOT SCALE THIS DRAWING	MANUFACTURING		SCALE 1 : 1	SHEET 3 OF 14
			DWG. NO.	A0157-2000-REF



UNLESS OTHERWISE SPECIFIED DIMENSIONS ARE IN INCHES TOLERANCES ARE : .XX +/- .010 .XXX +/- .005	CONTRACT NO.		 20 Cotton Road Nashua, New Hampshire 03063 (603) 883-2430 FAX (603) 882-2655	
	APPROVALS	DATE		
MATERIAL	DRAWN	06/26/07	LAYER 4 VCC, 1.8V PLANE 21161N EZ-KIT LITE	
	CHECKED			
FINISH	ENGINEERING		SIZE	DWG. NO. A0157-2000-REF
	QUALITY		B	
DO NOT SCALE THIS DRAWING	MANUFACTURING		SCALE 1 : 1	REV. 3.0
			SHEET 4 OF 14	



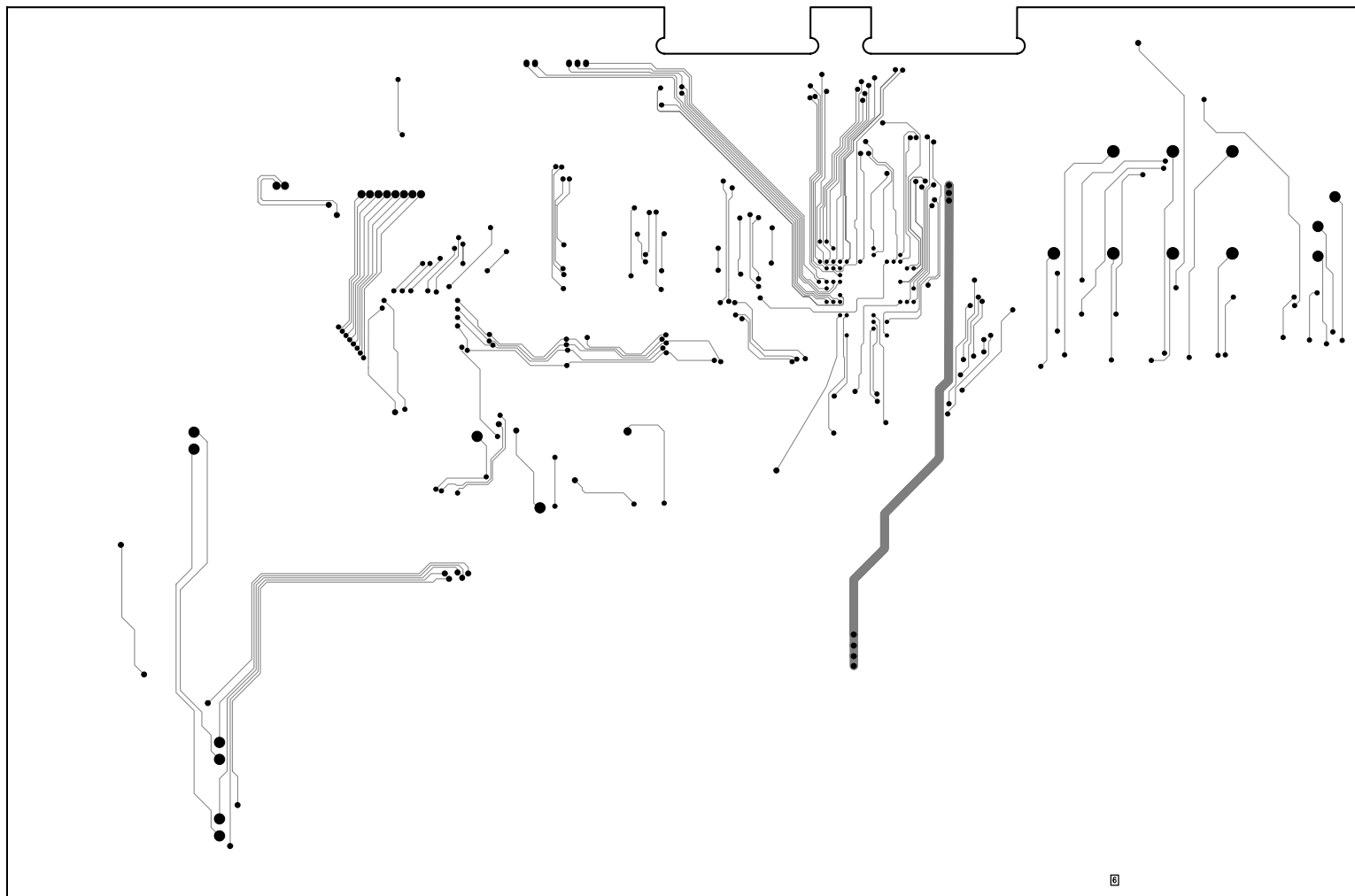
UNLESS OTHERWISE SPECIFIED DIMENSIONS ARE IN INCHES TOLERANCES ARE : .XX +/- .010 .XXX +/- .005	CONTRACT NO.		 20 Cotton Road Nashua, New Hampshire 03063 (603) 883-2430 FAX (603) 882-2655	
	APPROVALS	DATE		
MATERIAL	DRAWN	06/26/07	LAYER 5 3V PLANE 21161N EZ-KIT LITE	
	CHECKED			
FINISH	ENGINEERING		SIZE	REV. 3.0
	QUALITY		B	
DO NOT SCALE THIS DRAWING	MANUFACTURING		SCALE 1 : 1	SHEET 5 OF 14


ANALOG DEVICES 20 Cotton Road
Nashua, New Hampshire 03063
(603) 883-2430 FAX (603) 882-2655

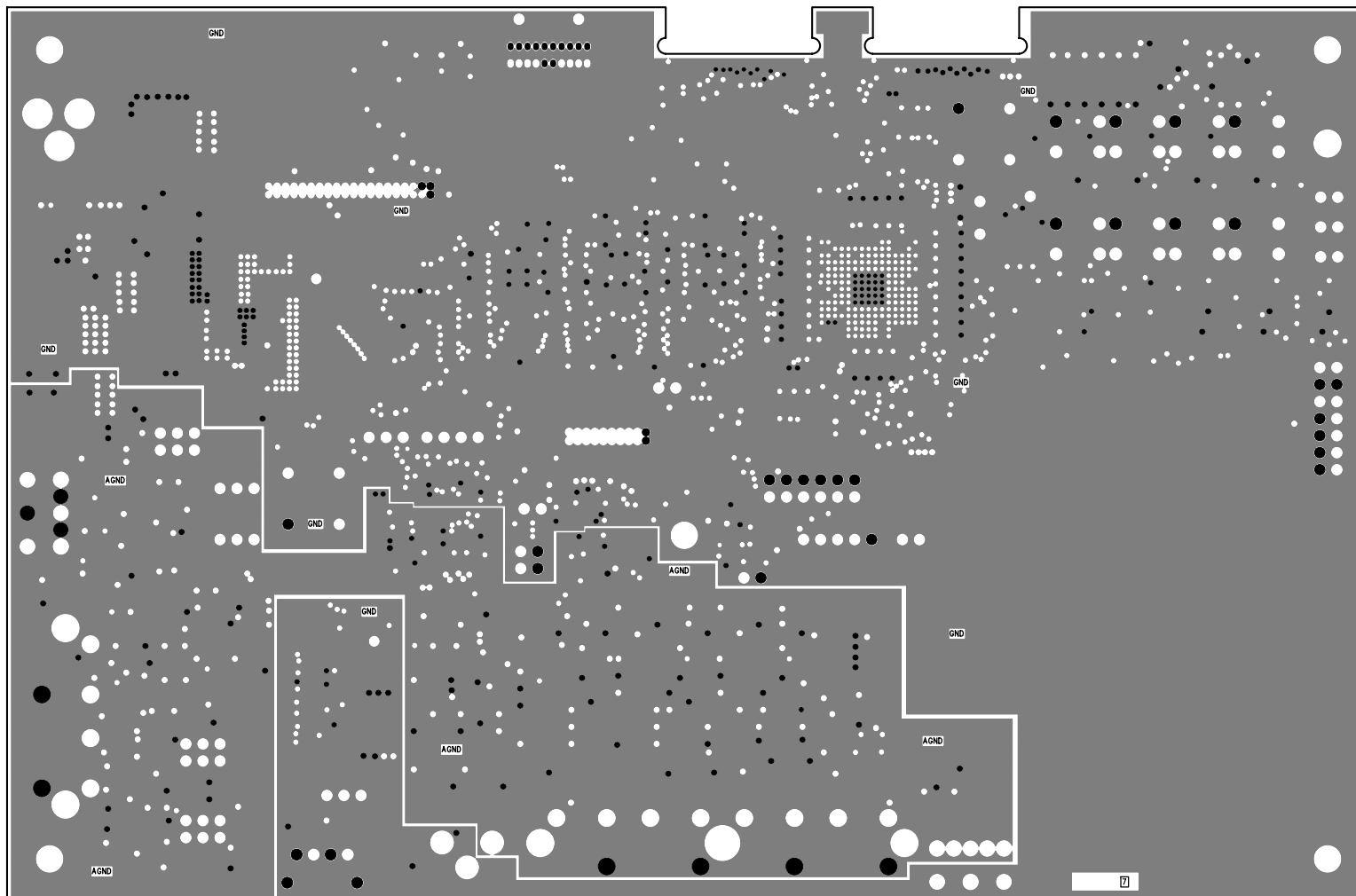
LAYER 5 3V PLANE
21161N EZ-KIT LITE


SIZE B DWG. NO. A0157-2000-REF REV. 3.0

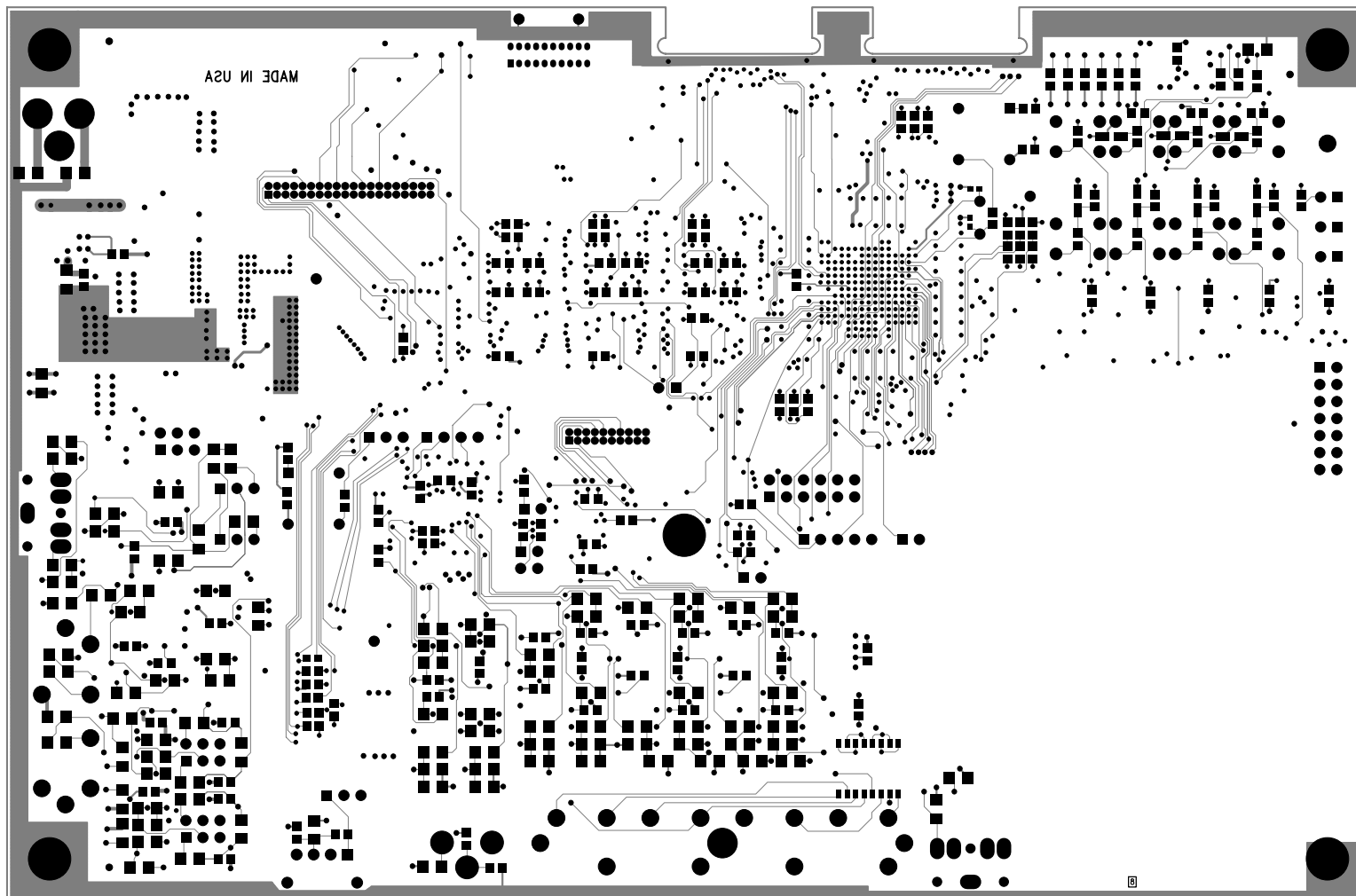
SCALE 1 : 1 SHEET 5 OF 14




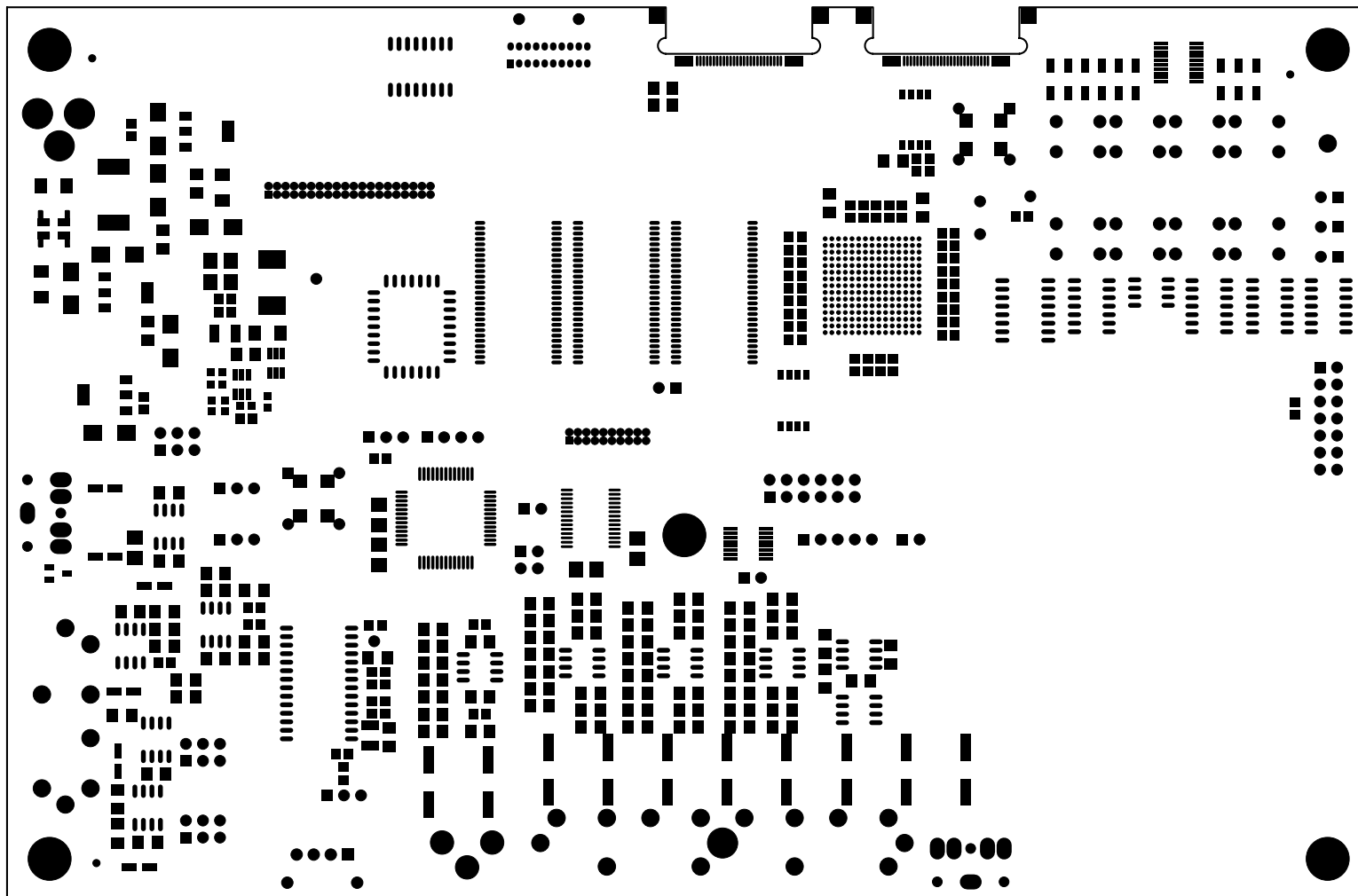
UNLESS OTHERWISE SPECIFIED DIMENSIONS ARE IN INCHES TOLERANCES ARE : .XX +/- .010 .XXX +/- .005	CONTRACT NO.		 20 Cotton Road Nashua, New Hampshire 03063 (603) 883-2430 FAX (603) 882-2655	
	APPROVALS	DATE		
MATERIAL	DRAWN	06/26/07	LAYER 6 INTER SIGNAL 21161N EZ-KIT LITE	
	CHECKED			
FINISH	ENGINEERING		SIZE	REV.
	QUALITY		B	3.0
DO NOT SCALE THIS DRAWING	MANUFACTURING		SCALE 1 : 1	SHEET 6 OF 14
			DWG. NO.	A0157-2000-REF





UNLESS OTHERWISE SPECIFIED DIMENSIONS ARE IN INCHES TOLERANCES ARE : .XX +/- .010 .XXX +/- .005	CONTRACT NO.		 20 Cotton Road Nashua, New Hampshire 03063 (603) 883-2430 FAX (603) 882-2655	
	APPROVALS	DATE		
MATERIAL	DRAWN	06/26/07	LAYER 7 GROUND PLANE 21161N EZ-KIT LITE	
	CHECKED			
FINISH	ENGINEERING		SIZE	DWG. NO. A0157-2000-REF
	QUALITY		B	
DO NOT SCALE THIS DRAWING	MANUFACTURING		SCALE 1 : 1	REV. 3.0
			SHEET 7 OF 14	



UNLESS OTHERWISE SPECIFIED DIMENSIONS ARE IN INCHES TOLERANCES ARE : .XX +/- .010 .XXX +/- .005	CONTRACT NO.		 20 Cotton Road Nashua, New Hampshire 03063 (603) 883-2430 FAX (603) 882-2655	
	APPROVALS	DATE		
MATERIAL	DRAWN	06/26/07	LAYER 8 BOTTOM SIDE 21161N EZ-KIT LITE	
	CHECKED			
FINISH	ENGINEERING		SIZE	REV.
	QUALITY		B	3.0
DO NOT SCALE THIS DRAWING	MANUFACTURING		SCALE 1 : 1	SHEET 8 OF 14
			DWG. NO.	A0157-2000-REF



UNLESS OTHERWISE SPECIFIED DIMENSIONS ARE IN INCHES TOLERANCES ARE : .XX +/- .010 .XXX +/- .005	CONTRACT NO.		 20 Cotton Road Nashua, New Hampshire 03063 (603) 883-2430 FAX (603) 882-2655	
	APPROVALS	DATE		
MATERIAL	DRAWN	06/26/07	SOLDER MASK TOP SIDE 21161N EZ-KIT LITE	
	CHECKED			
FINISH	ENGINEERING		SIZE	REV.
	QUALITY		B	3.0
DO NOT SCALE THIS DRAWING	MANUFACTURING		SCALE 1 : 1	SHEET 9 OF 14



20 Cotton Road
Nashua, New Hampshire 03063
(603) 883-2430 FAX (603) 882-2655

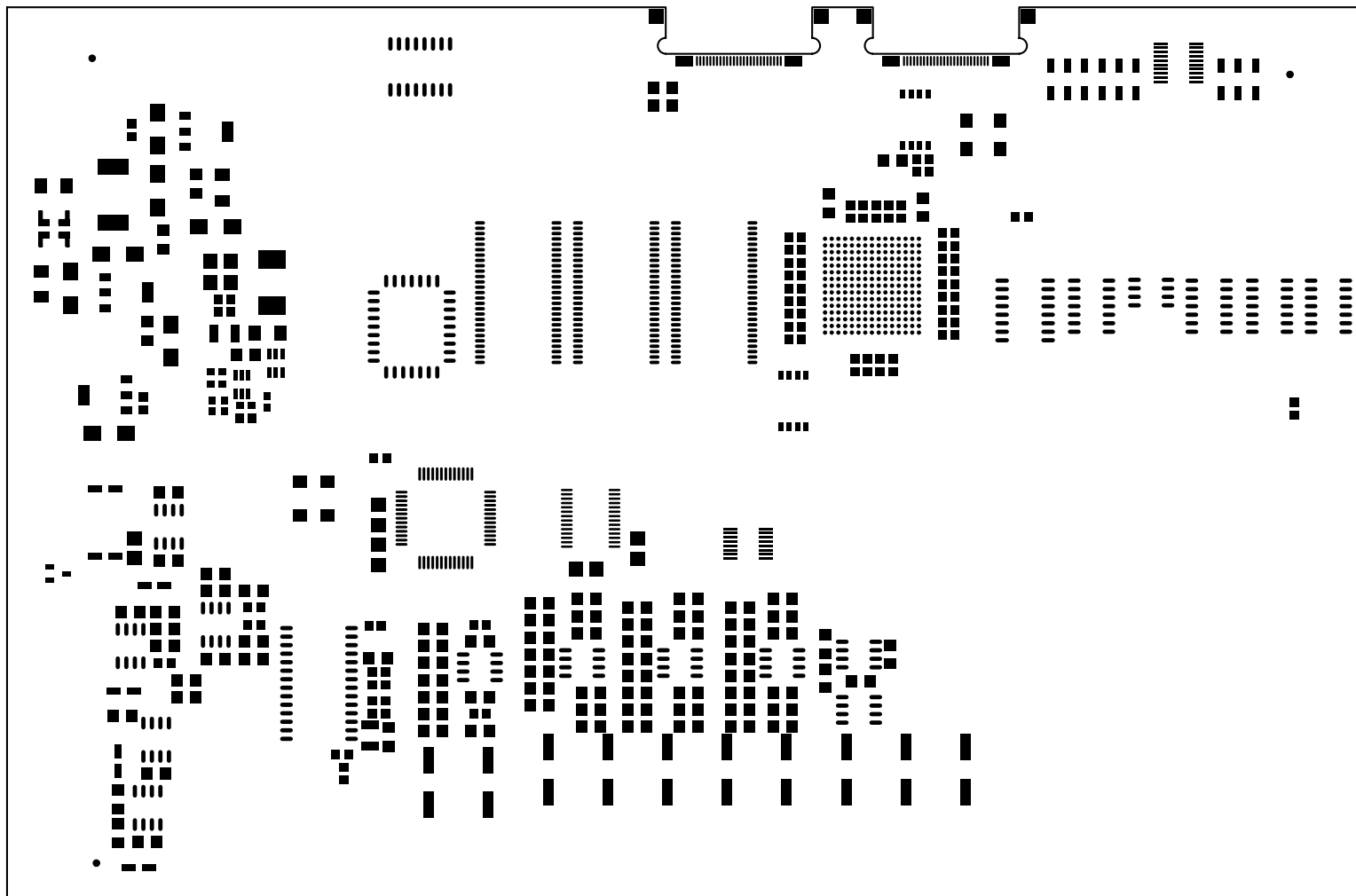
SOLDER MASK TOP SIDE
21161N EZ-KIT LITE


SIZE B
DWG. NO. A0157-2000-REF
REV. 3.0

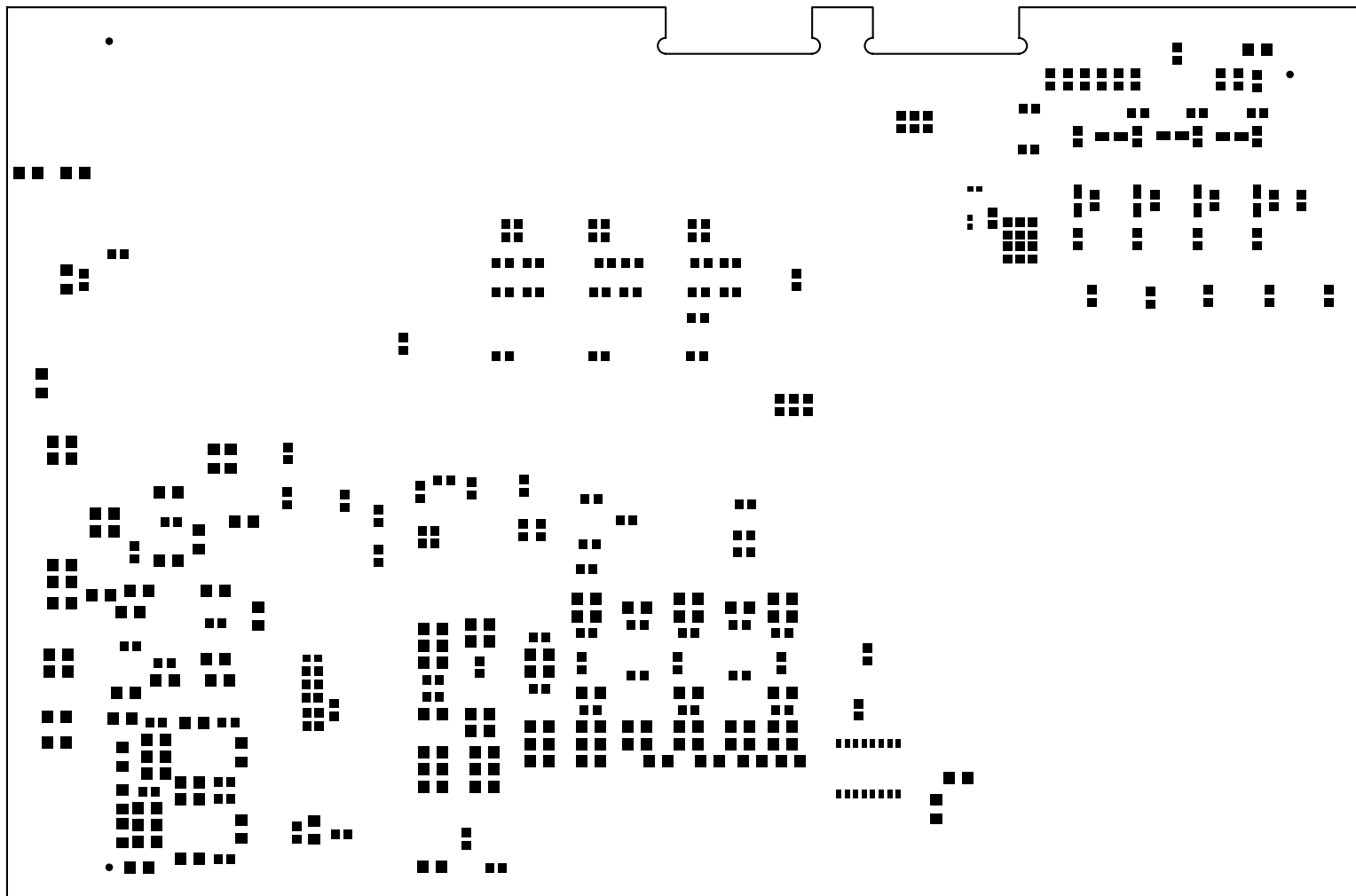
SCALE 1 : 1
SHEET 9 OF 14




UNLESS OTHERWISE SPECIFIED DIMENSIONS ARE IN INCHES TOLERANCES ARE : .XX +/- .010 .XXX +/- .005	CONTRACT NO.		 20 Cotton Road Nashua, New Hampshire 03063 (603) 883-2430 FAX (603) 882-2655	
	APPROVALS	DATE		
MATERIAL	DRAWN	06/26/07	SOLDER MASK BOTTOM SIDE 21161N EZ-KIT LITE	
	CHECKED			
FINISH	ENGINEERING		SIZE	REV.
	QUALITY		B	3.0
DO NOT SCALE THIS DRAWING	MANUFACTURING		SCALE 1 : 1	SHEET 10 OF 14
			DWG. NO.	A0157-2000-REF



UNLESS OTHERWISE SPECIFIED DIMENSIONS ARE IN INCHES TOLERANCES ARE : .XX +/- .010 .XXX +/- .005	CONTRACT NO.		 20 Cotton Road Nashua, New Hampshire 03063 (603) 883-2430 FAX (603) 882-2655		
	APPROVALS	DATE			
	MATERIAL	DRAWN	06/26/07	SOLDER PASTE TOP SIDE 21161N EZ-KIT LITE	
		CHECKED			
FINISH	ENGINEERING	SIZE B	DWG. NO. A0157-2000-REF	REV. 3.0	
	QUALITY				
DO NOT SCALE THIS DRAWING	MANUFACTURING	SCALE 1 : 1	SHEET 13 OF 14		



UNLESS OTHERWISE SPECIFIED DIMENSIONS ARE IN INCHES TOLERANCES ARE : .XX +/- .010 .XXX +/- .005	CONTRACT NO.		 20 Cotton Road Nashua, New Hampshire 03063 (603) 883-2430 FAX (603) 882-2655		
	APPROVALS	DATE			
MATERIAL	DRAWN	06/26/07	SOLDER PASTE BOTTOM SIDE 21161N EZ-KIT LITE		
	CHECKED				
FINISH	ENGINEERING		SIZE	DWG. NO. A0157-2000-REF	REV. 3.0
	QUALITY		B		
DO NOT SCALE THIS DRAWING	MANUFACTURING		SCALE 1 : 1	SHEET 14 OF 14	